

Symposium on medication safety

Workshop

Brussels – 16/12/2013

I. Welcome & Introduction (CLIP)

II. Objective

III. Presentations & discussion

Background

- Medications= an important source of **adverse events** in health care

- Landmark study on adverse drug events (ADEs)
(Bates, JAMA 1995 and 1997)
 - 6.5 ADEs / 100 hospital admissions
 - 12% life threatening, 30% serious
 - 28-42% are **preventable**
 - Annual cost for a 700-bed teaching hospital: \$2.8 million

Background

- Adverse effects of inappropriate use of medicines
 - Economical
 - Cost of treating ADEs > cost of drugs?
 - Clinical
 - ADEs, hospital admission, death,...
 - Humanistic
 - ↓ Quality of life and patients' satisfaction
 - Outcomes

Background

- *It is becoming increasingly clear that patient safety represents an important issue globally, and the amount of research on patient safety is skyrocketing.*
- *Despite this, it is not clear **how big** the problem of patient safety is.*
- *Furthermore, we need to go beyond the diagnosis of the safety problem and evaluate the **potential solutions** in various settings.*

Bates DW. Qual Saf Health Care 2008;17:156-7

- Optimising the use of medicines is central to the quality of patient care

Background

- Clinical pharmacy / pharmaceutical care
 - Patient-centred; collaborative approach
 - Spinewine, Louvain Medical 2003
 - >30 years of experience in Northern America
 - Evidence of effect on ECHO
 - Developing in Belgium, over the last 10 years
 - Clinical practice + research projects

Louvain Drug Research Institute

UCL - Louvain Drug Research Institute - Windows Internet Explorer



UCL http://www.uclouvain.be/en-ldri.html

Fichier Edition Affichage Favoris Outils ?

Favorites Galerie de composants W... Hotmail Sites suggérés

UCL UCL - Louvain Drug Research Institute

| agenda | directories | libraries | job opportunities | campus maps | emergency | | my office | log on |



LOUVAIN DRUG RESEARCH INSTITUTE (LDRI)

> UCL > SECTORS > MEDICAL SECTOR > Louvain Drug Research Institute

> LOUVAIN DRUG RESEARCH INSTITUTE

- > Objectives and mission statements
- > Research Groups
- > Full members
- > Structure and organization
- > Advisory Board
- > Technology transfer / Services

SCIENTIFIC REPORTS

- > Report 2012
- > Report 2011
- > Report 2009-2010

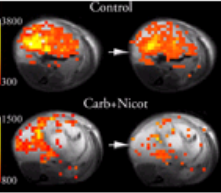
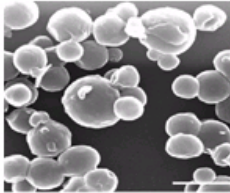
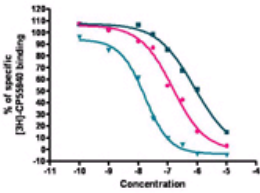
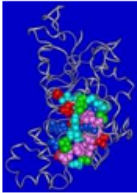
TRAINING & FELLOWSHIP

- > Doctorate


Louvain Drug Research Institute

The general objective of the Louvain Drug Research Institute (LDRI) is to develop fundamental and/or applied research projects in the field of drugs.

The research axes encompass the discovery and the conception of new active molecules, the study of their pharmacological profile, their metabolism and toxicity, their formulation, and the optimization of their use. These research projects are supported by two technological platforms: mass spectrometry analyses and pre-clinical magnetic resonance.



President : [Marie-Paule Mingeot](#)
Vice-Presidents : [Patrice Cani](#), [Véronique Préat](#), [Bernard Gallez](#)



LDRI SEMINARS

> **Prof. Jean-François Rees, Institut des Sciences de la Vie, UCL**

Clinical Pharmacy Research Group

- Created in 2010



A Spinewine, C Claeys, O Dalleur, B Sneyers, P Anrys, A Bastos, G Bendey-Diby

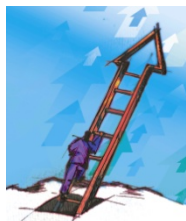
Clinical Pharmacy Research Group - overview

Optimising the use of medicines in daily practice is central to the quality of patient care

Research themes



- Quality of use of medicines =?
- Underlying factors = ?



- Approaches for optimisation
 - Clinical pharmacy
 - Audit and feedback, IT,...

Focus



- Older patients
- Patients in intensive care
- Transitions across settings
- ...

Methods

- Mixed methods
- Evaluative research

- I. Welcome & Introduction (CLIP)
- II. Objective of the workshop**
- III. Presentations & discussion

Objective

- To discuss research projects around medication safety conducted in the Belgian healthcare setting
- → Please ask questions, comment, argue,...

I. Welcome & Introduction (CLIP)

II. Objective

III. Presentations & discussion

Workshop: program

- Optimising medication use in nursing homes (Come-on)
 - P Anrys (UCL) & G Strauven (KUL)
- Detecting inappropriate prescribing for older patients at the community pharmacy
 - E Tommelein (UGent)
- How to find, filter and format EB information on the benefits and risks of medications
 - R Vander Stichele (UGent)
- Continuity of care in medication management
 - C Claeys & A Spinewine (UCL, ULB)